





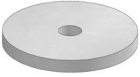
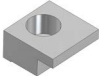



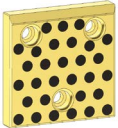
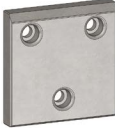




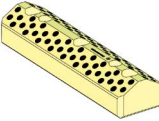
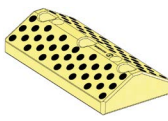





Die Components Normalien Componenti



OMCR[®]
STANDARD DIE COMPONENTS

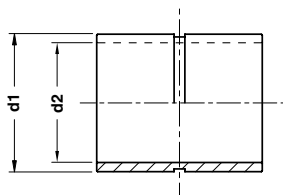
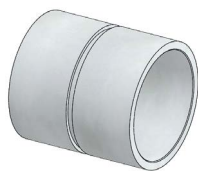
B2 2101 016	B2 2305 016	B2 2305 017	B2 2305 022	B2 2305 022
				
Bush for lifting pin Buchse für Tragbolzen Boccola per perno di sollevamento	Gage Einweiser Riferimento	Gage hardened Einweiser gehärtet Riferimento indurito	Gage for sensor Einweiser für Teillagekontrolle Riferimento per sensore	Gage for sensor Einweiser für Teillagekontrolle Riferimento per sensore
152	152	153	153	154
B2 2305 024	B2 2305 024	B2 2604 012	B2 2615 002	B2 2705 011
				
Gage for sensor Einweiser für Teillagekontrolle Riferimento per sensore	Gage for sensor Einweiser für Teillagekontrolle Riferimento per sensore	Lower air cushion pin Unterluftbolzen Candela inferiore	Upper air cushion pin Oberluftbolzen Candela superiore	Stop block Abstandsblock Distanziale
154	155	156	157	158
B2 2705 011	B2 2708 011	B2 2709 011	B2 2715 011	B2 2715 011
				
Stop block Abstandsblock Distanziale	Spacer Distanzstück Distanziale	Backing plate Distanzplatte Reazione per cilindro	Locating cone Kegeldistanz Cono di centraggio	Shim Ausgleichscheib Spessore
158	159	160	161	161
B2 2715 014	B2 2715 014	B2 2717 012a -013a	B2 2904 009	B2 2904 011
				
Locating cone Kegeldistanz Cono di centraggio	Shim Ausgleichscheib Spessore	Spacer plate toothed Distanzplatte gezahnt Tassello di compensazione	Retainer Sicherungsplatte Piastrina	Retaining bolt Sicherungsbolzen Perno di bloccaggio
162	162	163	163	164

<p>B2 2920 001</p>  <p>Guide post Führungssäule Colonna guida</p> <p>165</p>	<p>B2 2920 001</p>  <p>Guide post Führungssäule Colonna guida</p> <p>166</p>	<p>B2 2920 001</p>  <p>Guide post Führungssäule Colonna guida</p> <p>167</p>	<p>B2 2920 001</p>  <p>Guide post Führungssäule Colonna guida</p> <p>168</p>	<p>B2 2920 003</p>  <p>Washer Federscheibe Rondella per colonne</p> <p>169</p>
<p>B2 2920 003</p>  <p>Toe clamp Haltestück Ritegno per boccola</p> <p>169</p>	<p>B2 2933 001</p>  <p>Guide bush DIN 9834 Führungsbuchse DIN 9834 Boccola DIN 9834</p> <p>170</p>	<p>B2 2933 001</p>  <p>Guide bush Führungsbuchse Boccola</p> <p>170</p>	<p>B2 2933 001</p>  <p>Guide bush Führungsbuchse Boccola</p> <p>171</p>	<p>B2 2960 012</p>  <p>Wear plate VDI 3357 Gleitplatte VDI 3357 Piastra guida VDI 3357</p> <p>172</p>
<p>B2 2960 012</p>  <p>Wear plate VDI 3357 Gleitplatte VDI 3357 Piastra guida VDI 3357</p> <p>173</p>	<p>B2 2960 012</p>  <p>Wear plate VDI 3357 Gleitplatte VDI 3357 Piastra guida VDI 3357</p> <p>174</p>	<p>B2 2960 012</p>  <p>Wear plate VDI 3357 Gleitplatte VDI 3357 Piastra guida VDI 3357</p> <p>175</p>	<p>B2 2969 011</p>  <p>Gib VDI 3387 Führungslasche VDI 3387 Guida VDI 3387</p> <p>176</p>	<p>B2 2975 011</p>  <p>Guide bar VDI 3357 Führungslaste VDI 3357 Lardone VDI 3357</p> <p>176</p>
<p>B2 2978 021</p>  <p>"V" driver VDI 3357 Prismenführung VDI 3357 Guida a "V" VDI 3357</p> <p>177</p>	<p>B2 2978 021</p>  <p>"V" driver VDI 3357 Prismenführung VDI 3357 Guida a "V" VDI 3357</p> <p>177</p>	<p>B2 2978 021</p>  <p>"V" driver VDI 3357 Prismenführung VDI 3357 Guida a "V" VDI 3357</p> <p>178</p>	<p>B2 2978 021</p>  <p>"V" driver VDI 3357 Prismenführung VDI 3357 Guida a "V" VDI 3357</p> <p>178</p>	<p>B2 2978 023</p>  <p>Distance plate for "V" driver Höhenausgleich für Prismenführung Distanziale per guida a "V"</p> <p>179</p>

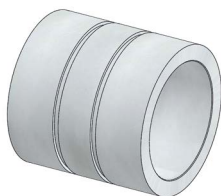
B2 2981 011	B2 3001 021	B2 3001 021	B2 3001 021	B2 3001 021
				
Central guide Mittelführungen Guida centrale	Slide stop block Schieberranschlag Arresto slitta	Slide stop block Schieberranschlag Arresto slitta	Anti-rebound elastomer Dämpfungselement Ammortizzatore antirimbalzo	Slide stop block Schieberranschlag Arresto slitta
177	180	180	181	181
B2 3001 021	B2 3302 021	B2 3302 021	B2 3602 003	B2 3602 003
				
Anti-rebound elastomer Dämpfungselement Ammortizzatore antirimbalzo	Coupling plate Befestigungsplatte Staffa di reazione	Coupling nut Kupplungsmutter Aggancio staffa	Shim Prägestempel Spessore	Visual locator setting punch Stempel f. entgasungsnoppen Punzone di visualizzazione
182	182	183	183	184
B2 3765 001	B2 4010 001	B2 4068 001	B2 4068 002	B2 4069 001
				
Key Passfeder Chiavetta	Backing plate Distanzkappe Reazione per cilindro	Locating pin Zentrierbolzen Centraggio	Locating pin Zentrierbolzen Centraggio	Key Passfeder Chiavetta
184	185	185	186	186
B2 5601 011	B2 5602 011	B2 5602 012	B2 5605 011	B2 5605 011a
				
Lifting pin Tragbolzen mit Fallringsicherung Perno di sollevamento	Lifting bracket with rope stop safety Tragzapfen mit Seilsicherung Staffa di sollevamento con sicurezza fermafune	Lifting pin VDI 3366 Tragschraube VDI 3366 Perno di sollevamento VDI 3366	Lifting bracket with pin and locating pins Tragwange mit Tragbolzen und Zentrierbolzen Staffa di sollevamento completa di perno e centraggi	Lifting bracket with pin and keys Tragwange mit Tragbolzen und Passfeder Staffa di sollevamento completa di perno e chiave
187	188	189	190	191

B2 5605 012	B2 5702 012	B2 6201 011	B2 6201 012	B2 6202 005
				
<p>Lifting pin Tragbolzen mit Fallringsicherung Perno di sollevamento</p>	<p>Pad retainer pin Steckbolzen Perno di arresto</p>	<p>Washer Scheibe Rondella</p>	<p>Spacer tube Distanzbuchse Tubo distanziale</p>	<p>Buffer Stossdämpfer Ammortizzatore</p>
<p>192</p>	<p>193</p>	<p>194</p>	<p>195</p>	<p>196</p>
B2 6202 006	B2 6202 006	B2 6204 012		
				
<p>Washer Scheibe Rondella</p>	<p>Washer Scheibe Rondella</p>	<p>Shock absorber Halteelement Ammortizzatore</p>		
<p>196</p>	<p>197</p>	<p>197</p>		

BUSH FOR LIFTING PIN - BUCHSE FÜR TRAGBOLZEN - BOCCOLA PER PERNO DI SOLLEVAMENTO



FORM A



FORM B

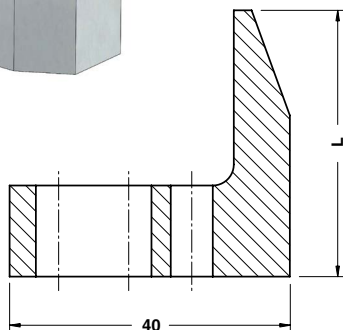
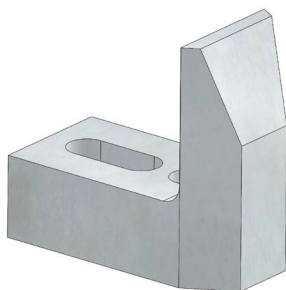
Notes

Material: Si35

STOCK

ORDER EXAMPLE	BMW CODE		
	2 173 600		
BMW CODE	d1	d2	FORM
2 173 599	44	34	A
2 173 600	52	42	A
2 173 601	62	52	A
2 173 602	75	65	A
2 173 603	100	78	B
2 173 604	105	78	B

GAGE - EINWEISER - RIFERIMENTO



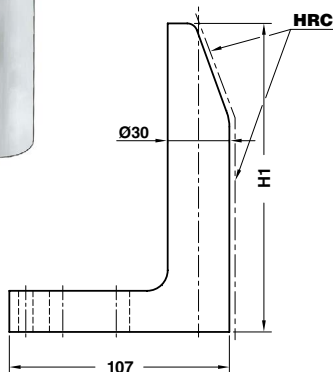
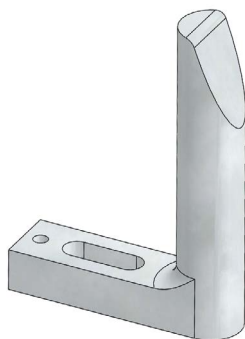
Notes

Material: 21MnCr5 - HRC: 58÷60

STOCK

ORDER EXAMPLE	BMW CODE	
	2 175 120	
BMW CODE	L	
2 175 119	28	
2 175 120	38	
2 175 121	48	
5 792 350	68	
5 792 351	88	

GAGE HARDENED - EINWEISER GEHÄRTET - RIFERIMENTO INDURITO



Notes

Material: CK60 - HRC: 58÷60

STOCK



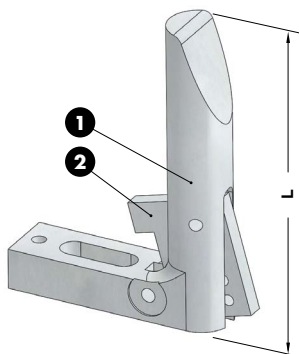
BMW CODE

2 173 836

BMW CODE	H1
2 173 835	65
2 173 836	90
2 173 837	120
2 173 838	150
2 173 839	180
2 175 927	210
2 173 840	250
2 175 127	300
2 175 128	350

Standard BMW

GAGE FOR SENSOR - EINWEISER FÜR TEILLAGEKONTROLLE - RIFERIMENTO PER SENSORE



STOCK

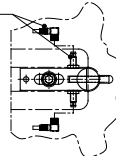


Notes

- 1** Material: CK60
- 2** Material: Si37 - HRC: 50÷55

Application example

B2 3503 23

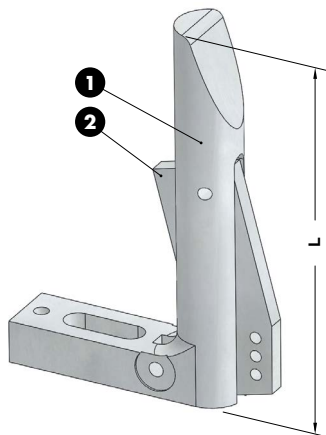


BMW CODE

2 173 842

BMW CODE	L	Sensor
2 173 841	120	included
2 173 842	120	not included
2 173 843	150	included
2 173 844	150	not included

GAGE FOR SENSOR - EINWEISER FÜR TEILLAGEKONTROLLE - RIFERIMENTO PER SENSORE



STOCK

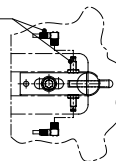


Notes

- 1** Material: CK60
- 2** Material: Si37 - HRC: 50±55

Application example

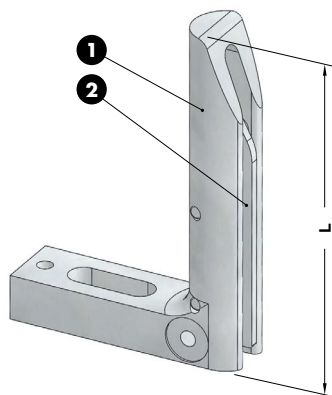
B2 3503 23



BMW CODE
2 173 846

BMW CODE	L	Sensor
2 173 845	180	included
2 173 846	180	not included
2 173 847	250	included
2 173 848	250	not included

GAGE FOR SENSOR - EINWEISER FÜR TEILLAGEKONTROLLE - RIFERIMENTO PER SENSORE



STOCK



Notes

- 1** Material: CK60
- 2** Material: Si37 - HRC: 58±60

Only for replacement
Nur für Reparatur
Solo per riparazione

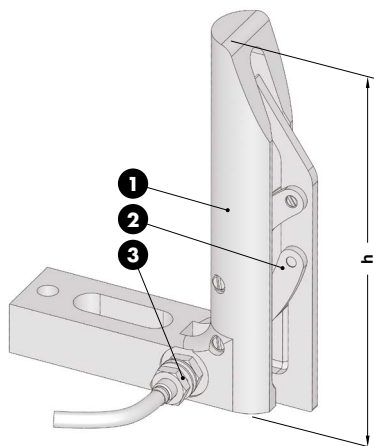


BMW CODE
2 173 850

BMW CODE	L
2 173 849	120
2 173 850	150
2 173 851	180
2 173 852	250
2 173 853*	250

* With short plate
Mit Kurzschild
Con piastra corta

GAGE WITH SENSOR - EINWEISER MIT TEILLAGEKONTROLLE - RIFERIMENTO CON SENSORE

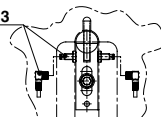


Notes

- 1** Material: CK60 - HRC: 58÷60
- 2** Material: 16MnCr5 - HRC: 58÷60
- 3** Proximity sensor with cable coupling

Application example

B2 3503 23



BMW CODE
2 175 999

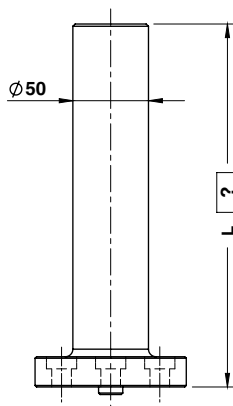
BMW CODE	h
2 175 998	120
2 175 999	150
2 176 000	180
2 176 001	250

Standard BMW

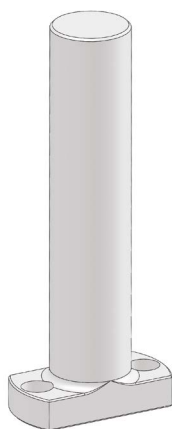
LOWER AIR CUSHION PIN - UNTERLUFTBOLZEN - CANDELA INFERIORE



FORM A



FORM B



FORM C



85 < L ≤ 500 mm

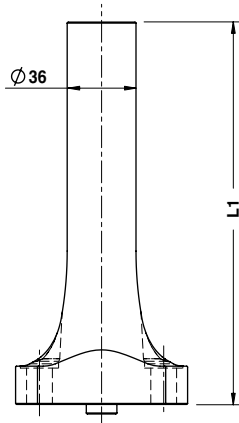
Notes

Material: CK45 - 800±1000 N/mm²



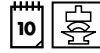
ORDER EXAMPLE 	BMW CODE	L=355
	6 293 157	355
BMW CODE		FORM
6 293 156		A
6 293 157		B
6 293 158		C

UPPER AIR CUSHION PIN - OBERLUFTBOLZEN - CANDELA SUPERIORE



Notes

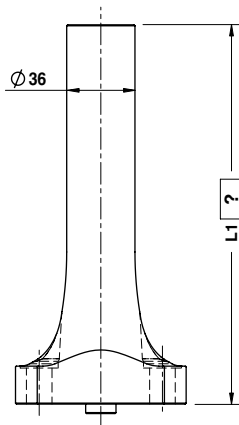
Material: 42CrMo4
800±1000 N/mm²



BMW CODE	
2 175 218	
BMW CODE	L1
2 175 217	150
2 175 218	175
2 175 219	200
2 175 220	225
2 175 221	250

Standard BMW

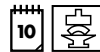
UPPER AIR CUSHION PIN - OBERLUFTBOLZEN - CANDELA SUPERIORE



L max = 250 mm

Notes

Material: 42CrMo4
800±1000 N/mm²



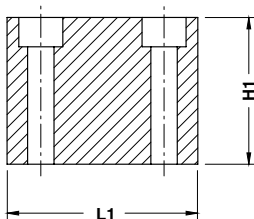
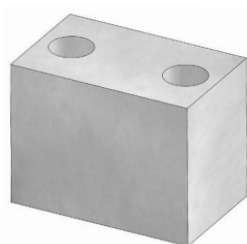
BMW CODE	
2 175 222	
BMW CODE	L1=185
2 175 222	185
BMW CODE	
2 175 222	

STOP BLOCK - ABSTANDSBLOCK - DISTANZIALE

STOCK

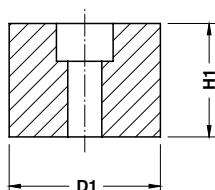
Notes

Material: Si37



ORDER EXAMPLE 	BMW CODE	
	2 175 075	
BMW CODE	L1	H1
2 175 074	65	30
2 175 075	65	50
2 175 076	100	30
2 175 077	100	50
2 175 375	80	30
2 175 376	100	30

STOP BLOCK - ABSTANDSBLOCK - DISTANZIALE



Notes

Material: CK45

STOCK

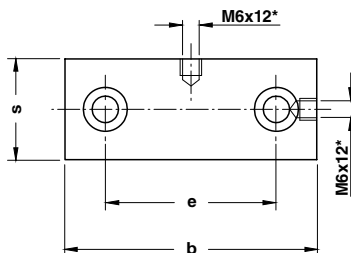
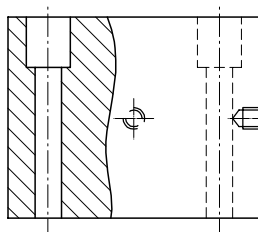
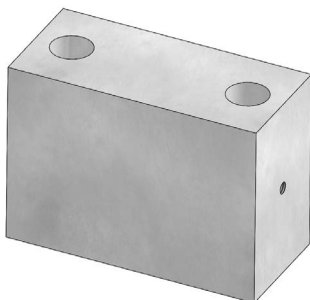
ORDER EXAMPLE 	BMW CODE	
	2 175 079	
BMW CODE	D1	H1
2 175 078	40	30
2 175 079	40	50

SPACER - DISTANZSTÜCK - DISTANZIALE

Notes

Material: St37

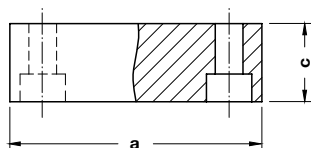
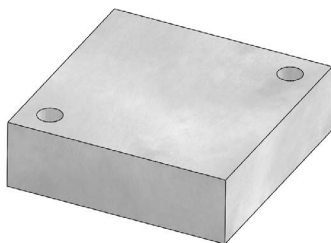
STOCK



BMW CODE
2 172 065

BMW CODE	b	e	s	Max load (kN)	BMW CODE *(without thread M6)	b	e	s	Max load (kN)
2 172 064	65	35	30	270	2 173 866	65	35	30	270
2 172 065	100	68	40	700	2 173 867	100	68	40	700
2 168 316	160	98	40	1100	2 173 868	160	98	40	1100
2 172 066	110	78	50	1000	2 173 869	110	78	50	1000
2 168 317	180	114	50	1600	2 173 870	180	114	50	1600
2 172 067	130	90	60	1500	2 173 871	130	90	60	1500
2 175 145	130	90	60	1500	2 175 146	130	90	60	1500
2 168 318	200	130	60	2300	2 173 872	200	130	60	2300
2 174 518	200	125	60	2300	2 174 519	200	125	60	2300
2 168 319	160	115	80	2350	2 173 873	160	115	80	2350
2 175 003	160	115	80	2350	2 175 004	160	115	80	2350
2 168 320	250	160	80	3650	2 173 874	250	160	80	3650
2 174 520	250	155	80	3650	2 174 521	250	155	80	3650

BACKING PLATE - DISTANZKAPPE - REAZIONE PER CILINDRO



Notes

Material: 90MnCrV8 - **HRC:** 49±52

STOCK

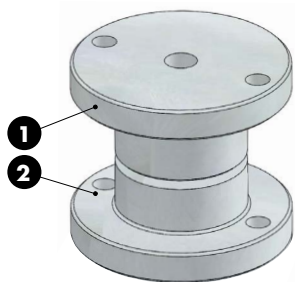


BMW CODE

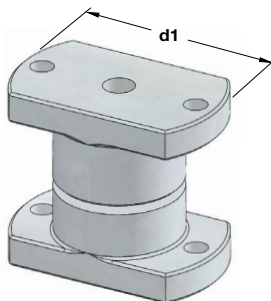
2 171 494

BMW CODE	a	c
2 171 493	60	48
2 171 494	60	43
2 171 495	70	39
2 171 496	100	36
2 171 497	100	31
2 172 219	60	30
2 172 220	60	25
2 172 221	70	20
2 172 222	100	20
2 172 223	100	15

LOCATING CONE - KEGELDISTANZ - CONO DI CENTRAGGIO



FORM A



FORM B

Notes

1 2
Material: 16MnCr5 - **HRC:** 60÷62

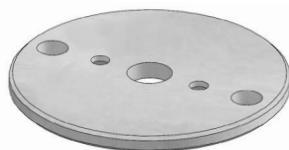
STOCK

	BMW CODE
	2 171 883

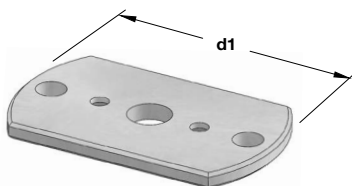
BMW CODE	d1	FORM
2 171 882	100	A
2 171 883	100	B
2 171 884	120	A
2 171 885	120	B

Standard BMW

SHIM - ABSTIMMSCHEIBE - SPESSORE



FORM A



FORM B

Notes

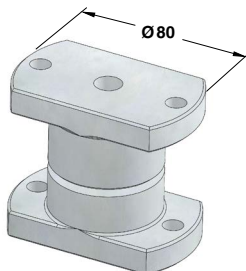
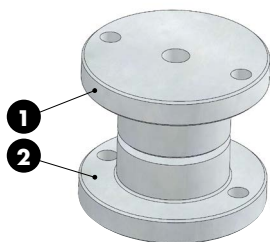
Material: CK45

STOCK

	BMW CODE
	2 171 887

BMW CODE	d1	FORM
2 171 886	100	A
2 171 887	100	B
2 171 888	120	A
2 171 889	120	B

LOCATING CONE - KEGELDISTANZ - CONO DI CENTRAGGIO



FORM B

Notes

1 2

Material: 16MnCr5 - **HRC:** 60÷62



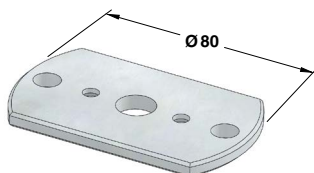
BMW CODE	2 173 124
-----------------	-----------

BMW CODE	FORM
2 173 123	A
2 173 124	B

SHIM - ABSTIMMSCHEIBE - SPESSORE



FORM A



FORM B

Notes

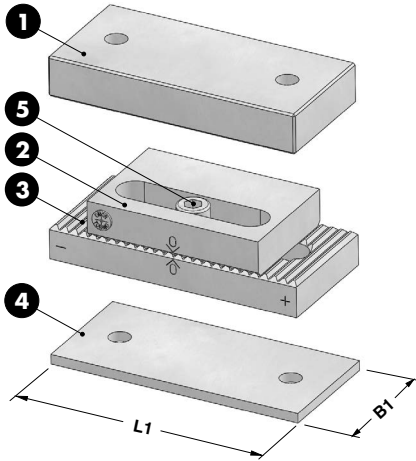
Material: CK45



BMW CODE	2 173 126
-----------------	-----------

BMW CODE	FORM
2 173 125	A
2 173 126	B

SPACER PLATE TOOTHED - DISTANZPLATTE GEZAHNT - TASSELLO DI COMPENSAZIONE



Notes

1 2 3

Material: 90MnCrV8 - **HRC:** 58÷60

4 Material: Si52

5 DIN 912

STOCK



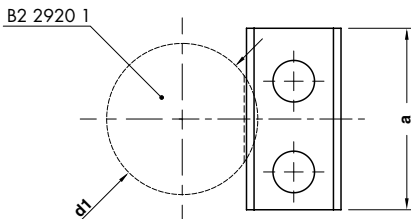
BMW CODE

2 171 715

BMW CODE	B1	L1	*
2 171 714	60	130	12a
2 171 715	80	160	13a

Standard BMW

RETAINER - SICHERUNGSPLATTE - PIASTRINA



Notes

Material: Si37

STOCK

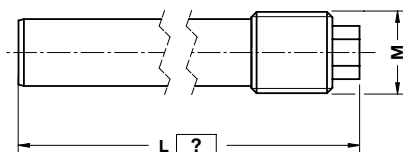


BMW CODE

2 174 517

BMW CODE	a	d1
2 174 516	40	25÷32
2 174 517	48	40÷50

RETAINING BOLT - SICHERUNGSBOLZEN - PERNO DI BLOCCAGGIO



Notes

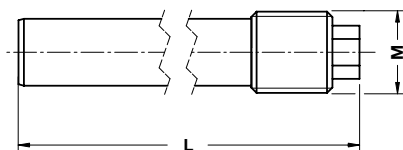
Material: CK45



ORDER EXAMPLE 	BMW CODE	L=240
	2 174 247	240

BMW CODE	L	M
2 174 247	≤ 300	M 30

RETAINING BOLT - SICHERUNGSBOLZEN - PERNO DI BLOCCAGGIO



Notes

Material: CK45



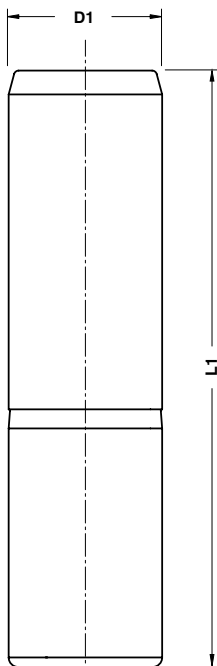
ORDER EXAMPLE 	BMW CODE
	2 174 246

BMW CODE	L	M
2 174 780	180	M 30
2 174 246	230	M 30
2 175 009	200	M 20

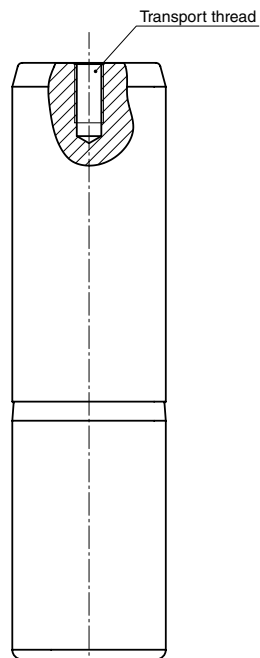
GUIDE POST - FÜHRUNGSSÄULE - COLONNA GUIDA

Notes

Material: Steel - **HRC** 60÷62



FORM A



FORM B

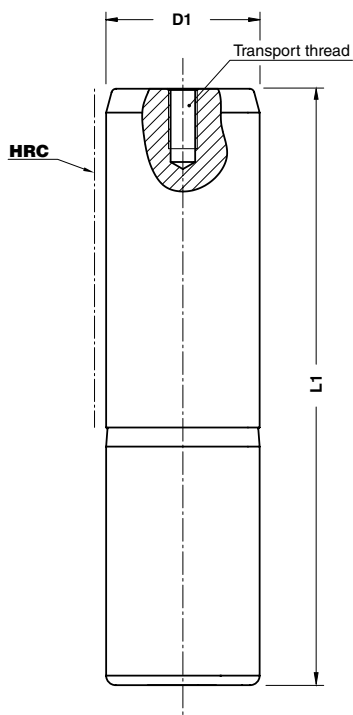
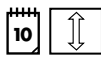
Standard BMW

	BMW CODE
	2 168 678

BMW CODE	D1	L1	FORM	BMW CODE	D1	L1	FORM
2 168 677	63	200	A	2 168 682	80	250	B
2 168 678	63	250	A	2 168 684	80	280	B
2 175 085	63	280	A	2 168 686	80	315	B
2 168 679	63	315	A	2 168 688	80	355	B
2 168 680	63	355	A				

GUIDE POST - FÜHRUNGSSÄULE - COLONNA GUIDA

Notes
Material: Steel - **HRC** 60÷62



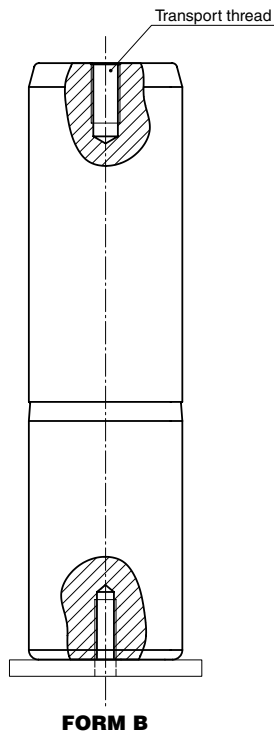
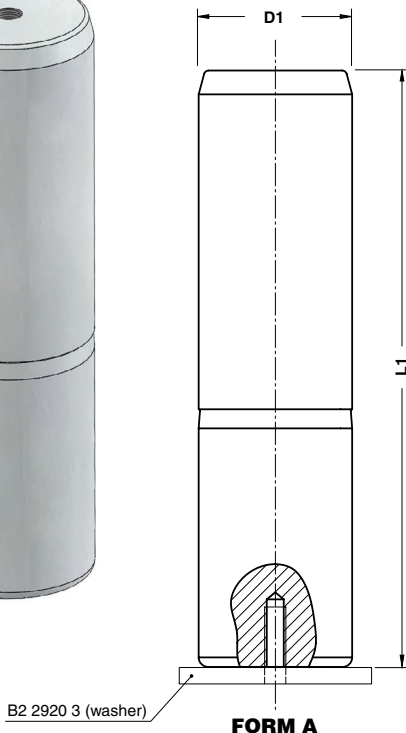
ORDER EXAMPLE 	BMW CODE
	2 175 006

BMW CODE	D1	L1	BMW CODE	D1	L1
2 175 005	80	250	2 171 214	100	355
2 175 006	80	280	2 171 216	100	400
2 175 007	80	315	2 171 218	125	355
2 175 008	80	355	2 172 239	125	400
2 174 777	100	280	2 171 220	125	450
2 174 778	100	315			

GUIDE POST - FÜHRUNGSSÄULE - COLONNA GUIDA

Notes

Material: Steel - **HRC** 60÷62



Standard BMW



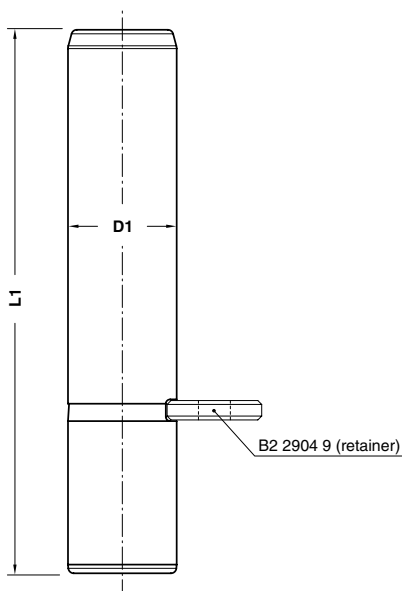
BMW CODE
2 173 907

BMW CODE	D1	L1	FORM	Washer Code	BMW CODE	D1	L1	FORM	Washer Code	BMW CODE	D1	L1	FORM	Washer Code
2 173 906	40	160	A	2173912	2 173 914	50	200	A	2173919	2 175 086	63	280	A	2173925
2 173 907	40	180	A	2173912	2 173 915	50	250	A	2173919	2 173 922	63	315	A	2173925
2 173 908	40	200	A	2173912	2 173 916	50	280	A	2173919	2 173 923	63	355	A	2173925
2 173 909	40	224	A	2173912	2 173 917	50	315	A	2173919	2 173 926	80	250	B	2 173 930
2 173 910	40	250	A	2173912	2 173 918	50	355	A	2173919	2 173 927	80	280	B	2 173 930
2 173 911	40	280	A	2173912	2 173 920	63	200	A	2173925	2 173 928	80	315	B	2 173 930
2 173 913	50	160	A	2173919	2 173 921	63	250	A	2173925	2 173 929	80	355	B	2 173 930

GUIDE POST - FÜHRUNGSSÄULE - COLONNA GUIDA

Notes

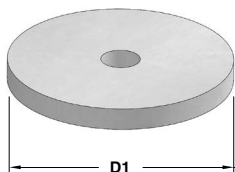
Material: Steel - **HRC** 60÷62



BMW CODE
2 174 493

BMW CODE	D1	L1	Retainer Code	BMW CODE	D1	L1	Retainer Code	BMW CODE	D1	L1	Retainer Code
2 174 492	25	125	2 174 516	2 174 499	40	160	2 174 517	2 174 506	50	200	2 174 517
2 174 493	25	140	2 174 516	2 174 500	40	180	2 174 517	2 174 507	50	250	2 174 517
2 174 494	25	160	2 174 516	2 174 501	40	200	2 174 517	2 174 508	50	280	2 174 517
2 174 495	25	180	2 174 516	2 174 502	40	224	2 174 517	2 174 509	50	315	2 174 517
2 174 496	25	200	2 174 516	2 174 503	40	250	2 174 517	2 174 510	50	355	2 174 517
2 174 497	32	160	2 174 516	2 174 504	40	280	2 174 517				
2 174 498	32	200	2 174 516	2 174 505	50	160	2 174 517				

WASHER - FEDERSCHEIBE - RONDELLA PER COLONNE



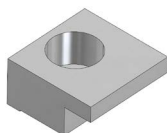
Notes
Material: CK45

STOCK

ORDER EXAMPLE	BMW CODE
	2 173 919
BMW CODE	D1
2 173 912	60
2 173 919	70
2 173 925	83
2 173 930	100

Standard BMW

TOE CLAMP - HALTESTÜCK - RITEGNO PER BOCCOLA



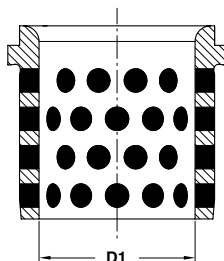
STOCK

Notes
Material: CK45

Application example

ORDER EXAMPLE	BMW CODE
	2 168 842
BMW CODE	d1
2 168 834	25-50
2 168 842	63-160

GUIDE BUSH DIN 9834 - FÜHRUNGSBUCHSE DIN 9834 - BOCCOLA DIN 9834



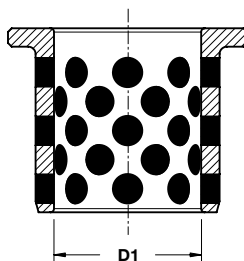
Notes

Material: Bronze + Graphite
HB > 190



	BMW CODE
	2 168 700
BMW CODE	D1
2 168 699	25
2 168 700	32
2 168 701	40
2 168 702	50
2 168 703	63
2 168 704	80
2 168 705	100
2 168 706	125
2 168 707	160

GUIDE BUSH - FÜHRUNGSBUCHSE - BOCCOLA



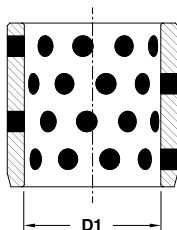
Notes

Material: Bronze + Graphite
HB > 190



	BMW CODE
	2 172 557
BMW CODE	D1
2 172 556	16
2 172 557	20

GUIDE BUSH - FÜHRUNGSBUCHSE - BOCCOLA



Notes

Material: Bronze + Graphite
HB > 190



BMW CODE
2 172 559

BMW CODE	D1
2 172 558	16
2 172 559	20

Standard BMW

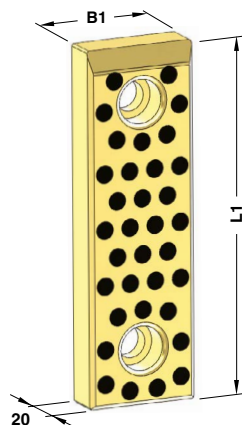
WEAR PLATE SELF-LUBRICATING VDI 3357 GLEITPLATTE BRONZE MIT FESTSCHMIERSTOFF VDI 3357 PIASTRA GUIDA AUTOLUBRIFICANTE VDI 3357

Notes

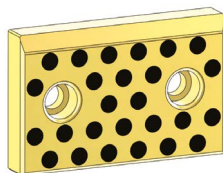
Material: Bronze + Graphite

HB > 190

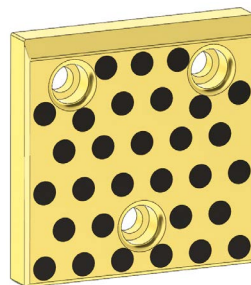
STOCK



FORM A



FORM B



FORM C



BMW CODE

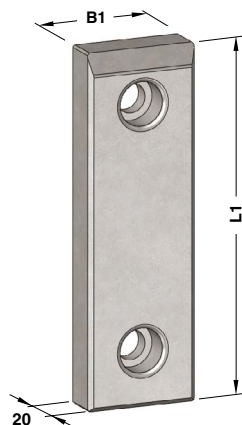
2 168 338

BMW CODE	B1	L1	FORM	BMW CODE	B1	L1	FORM
2 168 337	50	80	A	2 168 352	100	160	B
2 168 338	50	100	A	2 168 353	100	200	B
2 168 339	50	125	A	2 168 354	125	50	B
2 168 340	50	160	A	2 168 355	125	80	B
2 168 341	50	200	A	2 168 356	125	100	C
2 168 342	80	50	B	2 168 357	125	125	C
2 168 343	80	80	A	2 168 358	125	160	C
2 168 344	80	100	A	2 168 359	125	200	C
2 168 345	80	125	A	2 168 360	160	50	B
2 168 346	80	160	A	2 168 361	160	80	B
2 168 347	80	200	A	2 168 362	160	100	C
2 168 348	100	50	B	2 168 363	160	125	C
2 168 349	100	80	B	2 168 364	160	160	C
2 168 350	100	100	A	2 168 365	160	200	C
2 168 351	100	125	A				

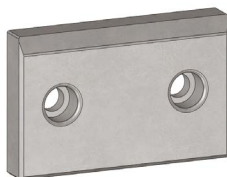
WEAR PLATE STEEL VDI 3357
GLEITPLATTE STAHL VDI 3357
PIASTRA GUIDA IN ACCIAIO VDI 3357

Notes

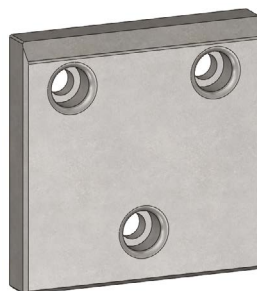
Material: X153CrMoV12 - HRC 58÷60



FORM A



FORM B



FORM C

Standard BMW



BMW CODE
2 168 367

BMW CODE	B1	L1	FORM	BMW CODE	B1	L1	FORM
2 168 366	50	80	A	2 168 381	100	160	B
2 168 367	50	100	A	2 168 382	100	200	B
2 168 368	50	125	A	2 168 383	125	50	B
2 168 369	50	160	A	2 168 384	125	80	B
2 168 370	50	200	A	2 168 385	125	100	C
2 168 371	80	50	B	2 168 386	125	125	C
2 168 372	80	80	A	2 168 387	125	160	C
2 168 373	80	100	A	2 168 388	125	200	C
2 168 374	80	125	A	2 168 389	160	50	B
2 168 375	80	160	A	2 168 390	160	80	B
2 168 376	80	200	A	2 168 391	160	100	C
2 168 377	100	50	B	2 168 392	160	125	C
2 168 378	100	80	B	2 168 393	160	160	C
2 168 379	100	100	A	2 168 394	160	200	C
2 168 380	100	125	A				

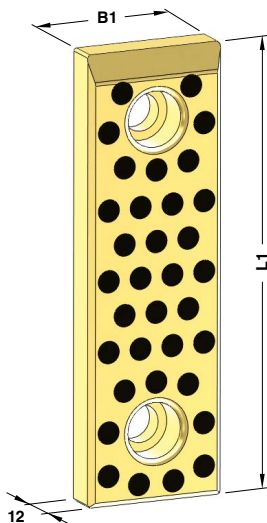
**WEAR PLATE SELF-LUBRICATING VDI 3357
GLEITPLATTE BRONZE MIT FESTSCHMIERSTOFF VDI 3357
PIASTRA GUIDA AUTOLUBRIFICANTE VDI 3357**

Notes

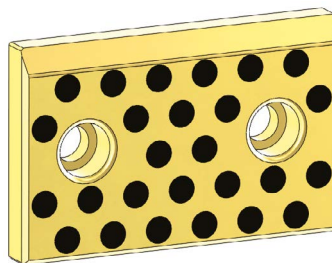
Material: Bronze + Graphite

HB > 190

STOCK



FORM A



FORM B



BMW CODE

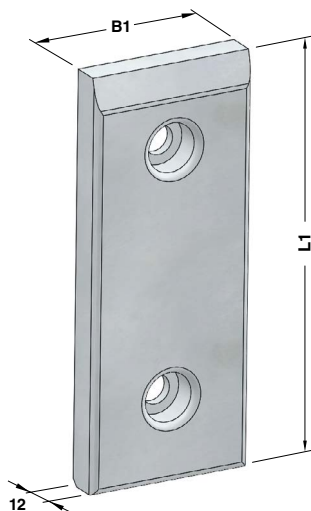
2 169 172

BMW CODE	B1	L1	FORM	BMW CODE	B1	L1	FORM
2 169 171	30	80	A	2 169 184	50	160	A
2 169 172	30	100	A	2 169 185	50	200	A
2 169 173	30	125	A	2 169 186	60	80	A
2 169 174	30	160	A	2 169 187	60	100	A
2 169 175	30	200	A	2 169 188	60	125	A
2 169 176	40	80	A	2 169 189	60	160	A
2 169 177	40	100	A	2 169 190	60	200	A
2 169 178	40	125	A	2 169 191	80	80	A
2 169 179	40	160	A	2 169 192	80	100	A
2 169 180	40	200	A	2 169 193	80	125	A
2 169 181	50	80	A	2 169 194	80	160	A
2 169 182	50	100	A	2 169 195	80	200	A
2 169 183	50	125	A	3 007 727	80	50	B

WEAR PLATE STEEL VDI 3357
GLEITPLATTE STAHL VDI 3357
PIASTRA GUIDA IN ACCIAIO VDI 3357

Notes

Material: 16MnCr5 - HRC 58±60

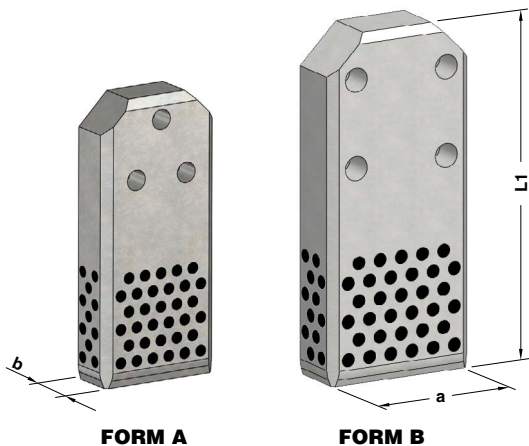


Standard BMW

	BMW CODE
	2 170 889

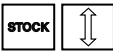
BMW CODE	B1	L1	BMW CODE	B1	L1
2 170 888	30	80	2 170 901	50	160
2 170 889	30	100	2 170 902	50	200
2 170 890	30	125	2 170 903	60	80
2 170 891	30	160	2 170 904	60	100
2 170 892	30	200	2 170 905	60	125
2 170 893	40	80	2 170 906	60	160
2 170 894	40	100	2 170 907	60	200
2 170 895	40	125	2 170 908	80	80
2 170 896	40	160	2 170 909	80	100
2 170 897	40	200	2 170 910	80	125
2 170 898	50	80	2 170 911	80	160
2 170 899	50	100	2 170 912	80	200
2 170 900	50	125			

GIB VDI 3387 - FÜHRUNGSLASCHE VDI 3387 - GUIDA VDI 3387



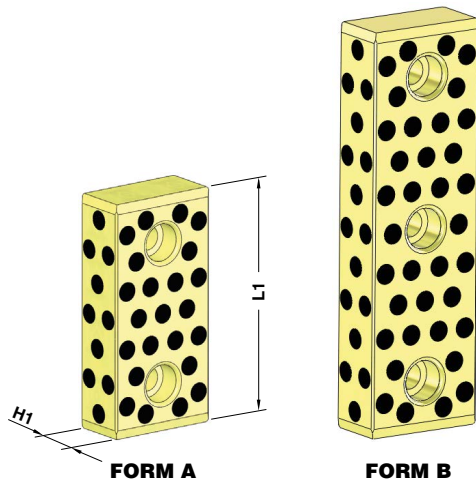
Notes

Material: CK45 + Graphite
HRC: 58÷60
 Only for replacement
 Nur für Reparatur
 Solo per riparazione



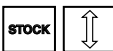
	BMW CODE			
	2 168 880			
BMW CODE	a	b	L1	FORM
2 168 879	112	45	250	A
2 168 880	140	45	315	B
2 168 881	190	56	400	B
2 174 248	240	56	500	B

GUIDE BAR VDI 3357 - FÜHRUNGSLEISTE VDI 3357 - LARDONE VDI 3357



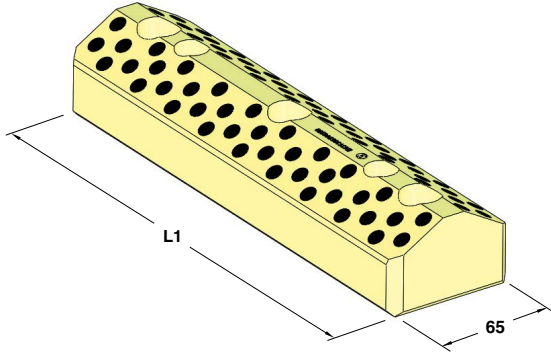
Notes

Material: Bronze + Graphite - HB >190



	BMW CODE		
	2 168 884		
BMW CODE	H1	L1	FORM
2 168 883	30	125	A
2 168 884	30	160	A
2 168 885	30	200	B
2 168 886	40	125	A
2 168 887	40	160	A
2 168 888	40	200	B

**"V" DRIVER SELF-LUBRICATING VDI 3357
PRISMENFÜHRUNG BRONZE MIT FESTSCHMIERSTOFF VDI 3357
GUIDA A "V" AUTOLUBRIFICANTE VDI 3357**



Notes
Material: Bronze + Graphite - **HB** >190

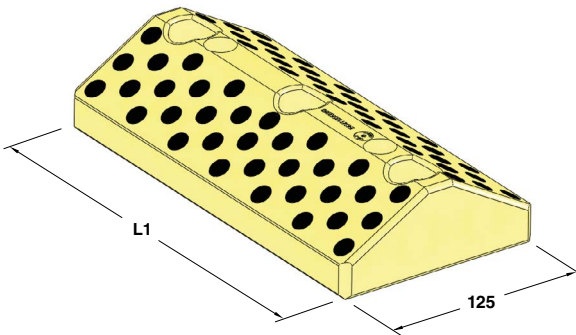
STOCK

	BMW CODE
	2 168 900

BMW CODE	L1
2 168 899	150
2 168 900	200
2 168 901	250
2 168 902	300

Standard BMW

**"V" DRIVER SELF-LUBRICATING VDI 3357
PRISMENFÜHRUNG BRONZE MIT FESTSCHMIERSTOFF VDI 3357
GUIDA A "V" AUTOLUBRIFICANTE VDI 3357**



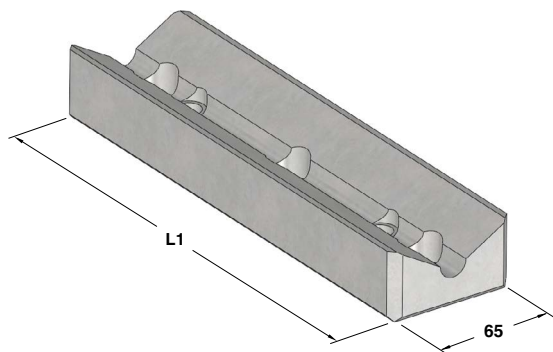
Notes
Material: Bronze + Graphite - **HB** >190

STOCK

	BMW CODE
	2 168 904

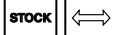
BMW CODE	L1
2 168 903	150
2 168 904	200
2 168 905	250
2 168 906	300

"V" DRIVER VDI 3357 - PRISMENFÜHRUNG VDI 3357 - GUIDA A "V" VDI 3357



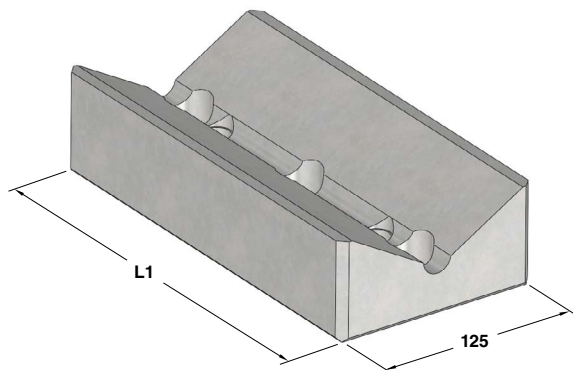
Notes

Material: CK45 - HRC: 58÷60



	BMW CODE
	2 168 919
BMW CODE	L1
2 168 918	150
2 168 919	200
2 168 920	250
2 168 921	300

"V" DRIVER VDI 3357 - PRISMENFÜHRUNG VDI 3357 - GUIDA A "V" VDI 3357



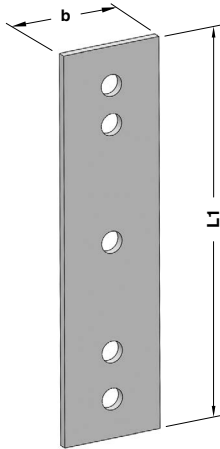
Notes

Material: CK45 - HRC: 58÷60



	BMW CODE
	2 168 923
BMW CODE	L1
2 168 922	150
2 168 923	200
2 168 924	250
2 168 925	300

**DISTANCE PLATE FOR "V" DRIVER
HÖHEN AUSGLEICH FÜR PRISMENFUHRUNG
DISTANZIALE PER GUIDA A "V"**



Notes
Material: St52

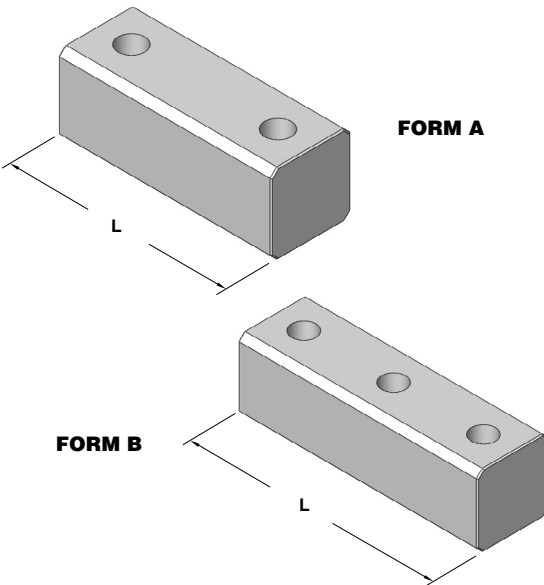
STOCK

	BMW CODE
	2 172 953

BMW CODE	b	L1
2 172 952	65	150
2 172 953	65	200
2 172 954	65	250
2 172 955	65	300
2 172 956	125	150
2 172 957	125	200
2 172 958	125	250
2 172 959	125	300

Standard BMW

CENTRAL GUIDE - MITTELFÜHRUNGEN - GUIDA CENTRALE



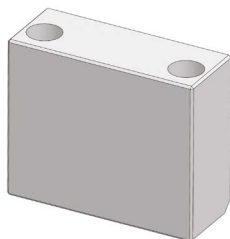
Notes
Material: 16MnCr5 - HRC 60±62

STOCK

	BMW CODE
	2 174 879

BMW CODE	L	FORM
2 174 878	125	A
2 174 879	160	A
2 174 880	200	B

SLIDE STOP BLOCK - SCHIEBERRANSCHLAG - ARRESTO SLITTA



Notes

Material: CK45

STOCK



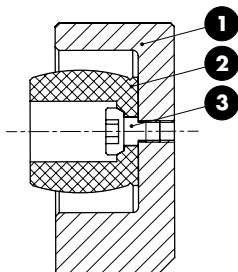
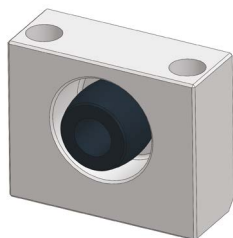
BMW CODE

2 175 393

BMW CODE

2 175 393

SLIDE STOP BLOCK - SCHIEBERRANSCHLAG - ARRESTO SLITTA



Notes

- 1** **Material:** CK45
- 2** **Material:** CO-Polyester Elastomer
- 3** Screw

STOCK



BMW CODE

2 174 768

BMW CODE

2 174 768

ANTI-REBOUND ELASTOMER - DÄMPFUNGSELEMENT - AMMORTIZZATORE ANTIRIMBALZO



Notes

Material: CO-Polyester Elastomer

STOCK



BMW CODE

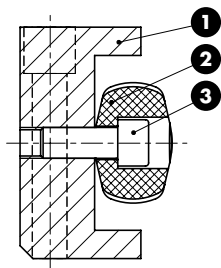
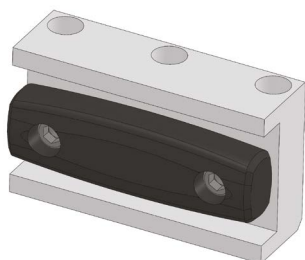
2 174 767

BMW CODE

2 174 767

Standard BMW

SLIDE STOP BLOCK - SCHIEBERRANSCHLAG - ARRESTO SLITTA



Notes

- 1 Material:** CK45
- 2 Material:** CO-Polyester Elastomer
- 3 M10x30 DIN 912**

STOCK



BMW CODE

2 174 838

BMW CODE

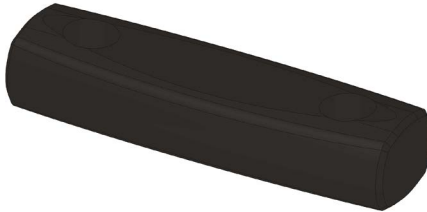
2 174 838

ANTI-REBOUND ELASTOMER - DÄMPFUNGSELEMENT - AMMORTIZZATORE ANTIRIMBALZO

Notes

Material: CO-Polyester Elastomer

STOCK



BMW CODE
2 174 837

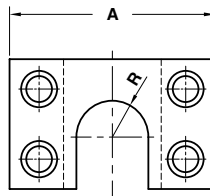
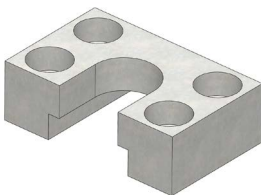
BMW CODE
2 174 837

COUPLING PLATE – BEFESTIGUNGSPLATTE - STAFFA DI REAZIONE

Notes

Material: CK45

STOCK



BMW CODE
2 175 052

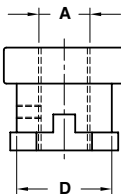
BMW CODE	A	R
2 175 051	100	20
2 175 052	120	25

COUPLING NUT - KUPPLUNGSMUTTER - AGGANCIO STAFFA

Notes

Material: CK45

STOCK



BMW CODE
2 175 054

BMW CODE	A	D
2 175 053	M16x1,5	37
2 175 054	M20x1,5	37
2 175 055	M27x2	47
2 175 056	M36x2	47

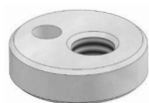
Standard BMW

SHIM - PRÄGESTEMPEL - SPESSORE

Notes

Material: Si37

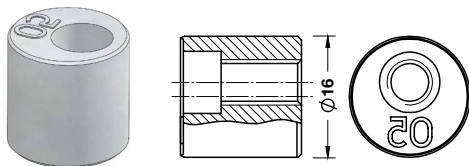
STOCK



BMW CODE
2 168 546

BMW CODE
2 168 546

VISUAL LOCATOR SETTING PUNCH STEMPEL F. ENTGASUNGSNOPPEN PUNZONE DI VISUALIZZAZIONE



STOCK

Notes

Material: X155CrVMo12 - **HRC:** 55±58

Only for replacement. Nur für Reparatur.
Solo per riparazione



BMW CODE

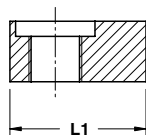
2 171 527

Option

U 25

BMW CODE	Option	BMW CODE	Option	BMW CODE	Option
2 169 003	two digit number	2 173 715	LP2	3 011 968	US
2 171 533	two digit number	2 173 716	RP1	3 011 975	ZA
2 169 002	standard	2 173 717	RP2	3 011 982	HU
2 175 114	two parallel straight line	3 011 177	MU	3 011 989	MX
2 171 531	L	3 011 178	DG	2 174 593	centre cross
2 171 532	R	3 011 179	RG	2 171 527	U + two digit number
2 173 712	P1	3 011 180	LZ	2 171 528	A + two digit number
2 173 713	P2	3 011 181	SW	2 171 529	B + two digit number
2 173 812	P3	2 175 080	CN	2 171 530	C + two digit number
2 173 813	P4	3 011 954	DE		
2 173 714	LP1	3 011 961	GB		

KEY - PASSFEDER - CHIAVETTA



Notes

Material: CK45

STOCK

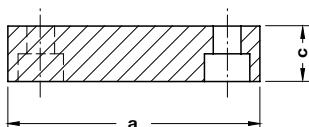
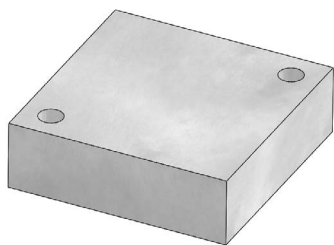


BMW CODE

2 175 929

BMW CODE	L1
2 175 928	16
2 175 929	18
2 175 930	20
2 175 931	22
2 175 932	26
2 175 933	32
2 175 934	35
2 175 935	40

BACKING PLATE - DISTANZKAPPE - REAZIONE PER CILINDRO



Notes

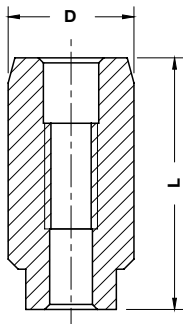
Material: 90MnCrV8 - **HRC:** 50÷52

STOCK

	BMW CODE	
	2 171 499	
BMW CODE	a	c
2 171 498	40	12
2 171 499	60	15
2 171 500	70	15
2 171 501	100	20
2 175 147	110	20

Standard BMW

LOCATING PIN - ZENTRIERBOLZEN - CENTRAGGIO



Notes

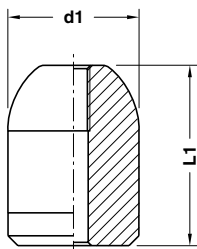
Material: 16MnCr5 - **HRC:** 58÷60

Only for replacement
Nur für Reparatur
Solo per riparazione

STOCK

	BMW CODE	
	2 169 053	
BMW CODE	D	L
0 970 435	25	50
0 970 413	32	50
0 970 412	40	50
0 970 411	50	50

LOCATING PIN - ZENTRIERBOLZEN - CENTRAGGIO



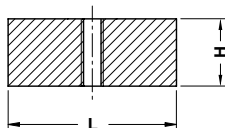
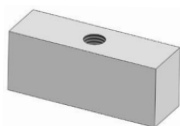
Notes

Material: 16MnCr5 - **HRC:** 58÷60

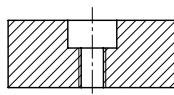
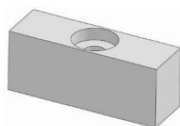
STOCK

ORDER EXAMPLE	BMW CODE	
	2 172 411	
BMW CODE	d1	L1
2 172 410	22	45
2 172 411	32	50
2 172 412	40	55
2 172 413	50	55
2 173 658	56	80

KEY - PASSFEDER - CHIAVETTA



FORM A



FORM B

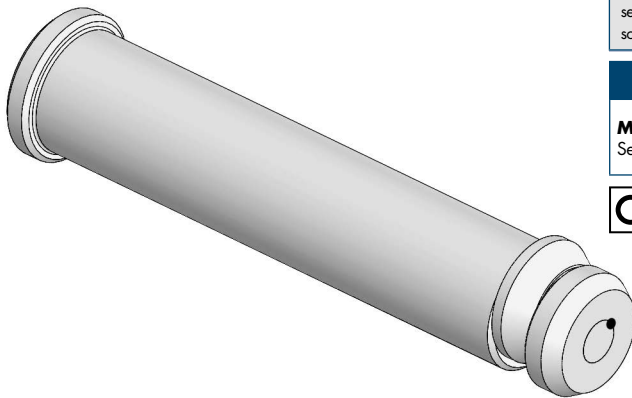
Notes

Material: CK45

STOCK

ORDER EXAMPLE	BMW CODE	FORM	
	2 172 224	A	
BMW CODE	H	L	FORM
2 172 053	14	80	A
2 172 224	30	80	A
2 172 808	14	50	A
2 172 809	30	120	A
2 174 226 A	20	50	A
2 174 226 B	20	50	B
2 174 227 A	20	80	A
2 174 227 B	20	80	B
2 174 835	10	50	B
2 174 836	10	80	B

LIFTING PIN - TRAGBOLZEN MIT FALLRINGSICHERUNG - PERNO DI SOLLEVAMENTO



Respect the max load
 Maximale Nutzlast beachten
 Rispettare il carico Max

WARNING - ACHTUNG - ATTENZIONE:

For safety reason, please consider always that the weight of the die has to be supported by just 2 lifting pins.

Aus Sicherheitsgründen stets berücksichtigen, dass zwei Tragbolzen das gesamte Werkzeuggewicht tragen müssen.

Per ragioni di sicurezza, considerare sempre che il peso dello stampo deve essere sopportato da 2 soli perni.

Notes

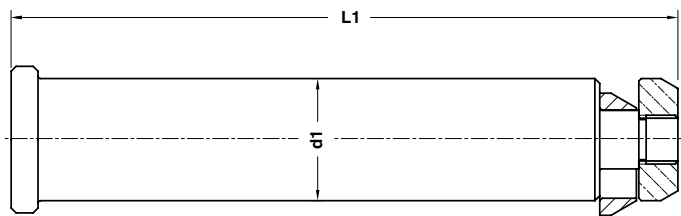
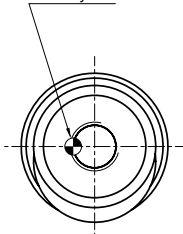
Material:

See table - siehe Tabelle - vedi tabella



Standard BMW

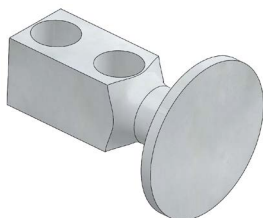
Security Pin



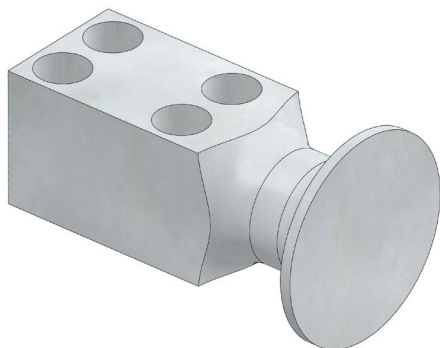
	BMW CODE
	2 168 396

BMW CODE	Max load (kg)	Max die weight (kg)	L1	d1	Material
2 168 395	3200	6400	175	32	CK45
2 168 396	5000	10000	225	40	CK45
2 168 397	8000	16000	273	50	CK45
2 168 398	12500	25000	347	63	CK45
2 168 399	31500	63000	422	76	42CrMo4 + QT

LIFTING BRACKET WITH ROPE STOP SAFETY
TRAGZAPFEN MIT SEILSICHERUNG
STAFFA DI SOLLEVAMENTO CON SICUREZZA FERMAFUNE



FORM A



FORM B



Respect the max. load
 Maximale Nutzlast beachten
 Rispettare il carico max.

WARNING - ACHTUNG - ATTENZIONE:

For safety reason, please consider always that the weight of the die has to be supported by just 2 lifting brackets.

Aus Sicherheitsgründen stets berücksichtigen, dass zwei Tragzapfens das gesamte Werkzeuggewicht tragen müssen.

Per ragioni di sicurezza, considerare sempre che il peso dello stampo deve essere sopportato da 2 sole staffe.

Notes

Material: CK45 - 700÷800 N/mm²

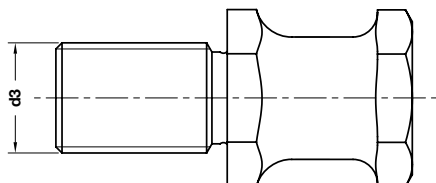
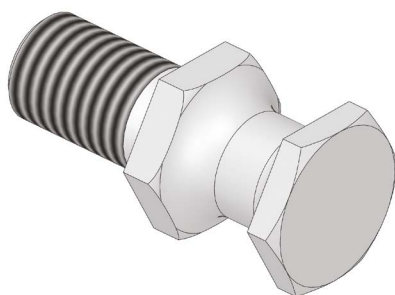
Screws not included



BMW CODE
3 275 834

BMW CODE	Max load (kg)	Max die weight (kg)	FORM	BMW CODE	Max load (kg)	Max die weight (kg)	FORM
2 169 231	320	640	A	3 275 839	5000	10000	A
3 275 834	630	1260	A	3 275 840	8000	16000	B
3 275 835	1250	2500	A	2 169 238	12500	25000	B
3 275 836	2000	4000	A	2 169 239	20000	40000	B
3 275 838	3200	6400	A				

LIFTING PIN VDI 3366
TRAGSCHRAUBE VDI 3366
PERNO DI SOLLEVAMENTO VDI 3366



Respect the max load
 Maximale Nutzlast beachten
 Rispettare il carico Max

WARNING - ACHTUNG - ATTENZIONE:

For safety reason, please consider always that the weight of the die has to be supported by just 2 lifting pins.

Aus Sicherheitsgründen stets berücksichtigen, dass zwei Tragbolzen das gesamte Werkzeuggewicht tragen müssen.

Per ragioni di sicurezza, considerare sempre che il peso dello stampo deve essere sopportato da 2 soli perni.

Notes

Material: CK45 - 700÷800 N/mm²

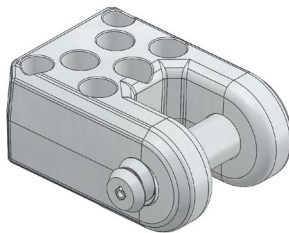
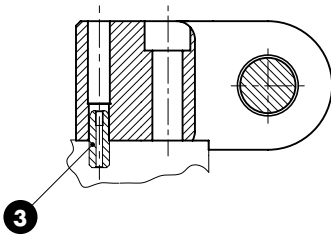


Standard BMW

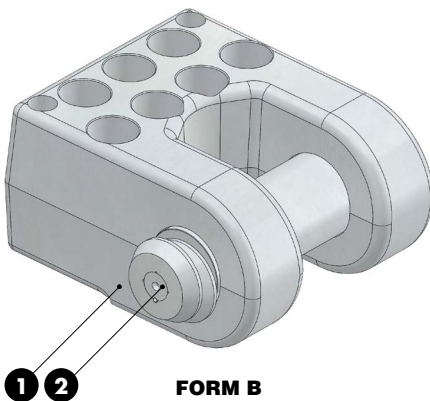
	BMW CODE
	2 172 289

BMW CODE	Max load (kg)	Max die weight (kg)	d3
2 172 288	320	640	M16
2 172 289	500	1000	M20

LIFTING BRACKET WITH PIN AND LOCATING PINS
TRAGWANGE MIT TRAGBOLZEN UND ZENTRIERBOLZEN
STAFFA DI SOLLEVAMENTO COMPLETA DI PERNO E CENTRAGGI



FORM A



FORM B



Respect the max load
 Maximale Nutzlast beachten
 Rispettare il carico Max

WARNING - ACHTUNG - ATTENZIONE:
 For safety reason, please consider always that the weight of the die has to be supported by just 2 lifting brackets.

Aus Sicherheitsgründen stets berücksichtigen, dass zwei Tragwagen das gesamte Werkzeuggewicht tragen müssen.

Per ragioni di sicurezza, considerare sempre che il peso dello stampo deve essere sopportato da 2 sole staffe.

Notes

- 1** Material: St52
- 2** Material: CK45
- 3** B2 4068 2
 Material: 16MnCr5 - HRC: 58÷60

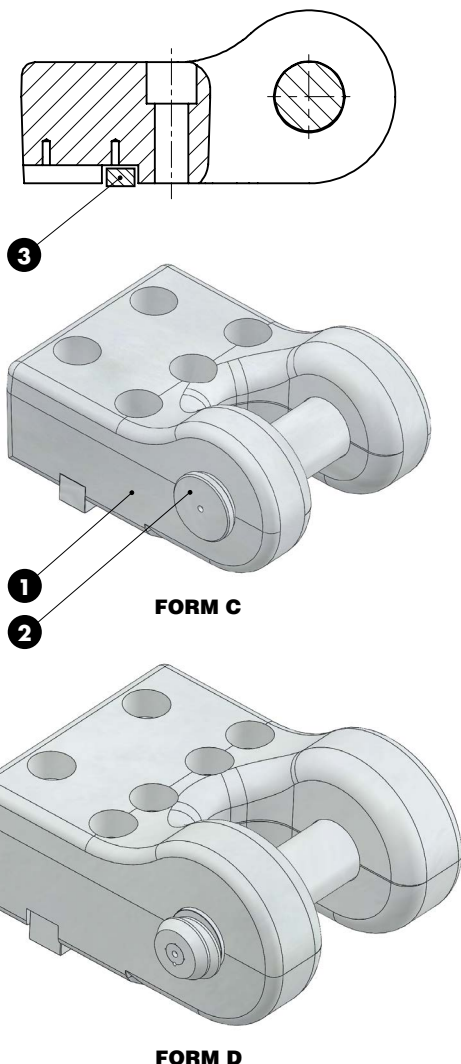
Including screws



	BMW CODE
	2 174 861

BMW CODE	Max load (kg)	Max die weight (kg)	FORM	BMW CODE	Max load (kg)	Max die weight (kg)	FORM
2 174 690	3200	6400	A	2 175 233	12500	25000	A
2 174 861	5000	10000	A	2 174 694	18000	36000	B
2 174 692	8000	16000	A				

LIFTING BRACKET WITH PIN AND KEYS
TRAGWANGE MIT TRAGBOLZEN UND PASSFEDER
STAFFA DI SOLLEVAMENTO COMPLETA DI PERNO E CHIAVETTE



Respect the max load
 Maximale Nutzlast beachten
 Rispettare il carico Max

WARNING - ACHTUNG - ATTENZIONE:
 For safety reason, please consider always that the weight of the die has to be supported by just 2 lifting brackets.

Aus Sicherheitsgründen stets berücksichtigen, dass zwei Tragwagen das gesamte Werkzeuggewicht tragen müssen.

Per ragioni di sicurezza, considerare sempre che il peso dello stampo deve essere sopportato da 2 sole staffe.

Notes

- 1** Material: St52
- 2** Material: CK45 - **FORM C**
- 2** Material: 42CrMo4 - **FORM D**
- 3** C14.20 - Material: CK45

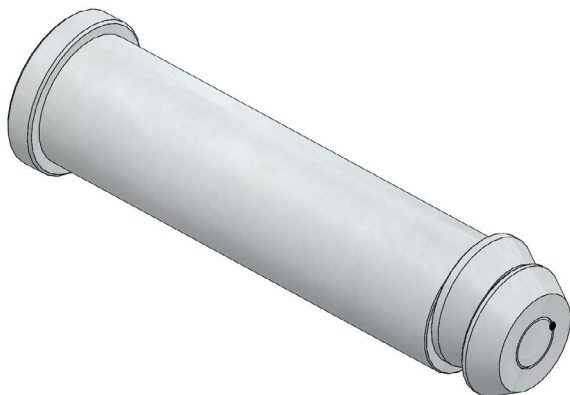
Including screws



ORDER EXAMPLE 	BMW CODE
	2 174 864

BMW CODE	Max load (kg)	Max die weight (kg)	FORM
2 174 863	25000	50000	C
2 174 864	31500	63000	D

REPLACEMENT LIFTING PIN FOR LIFTING BRACKET BMW ERSATZTRAGBOLZEN FÜR TRAGWANGE BMW PERNO DI RICAMBIO PER STAFFA DI SOLLEVAMENTO BMW



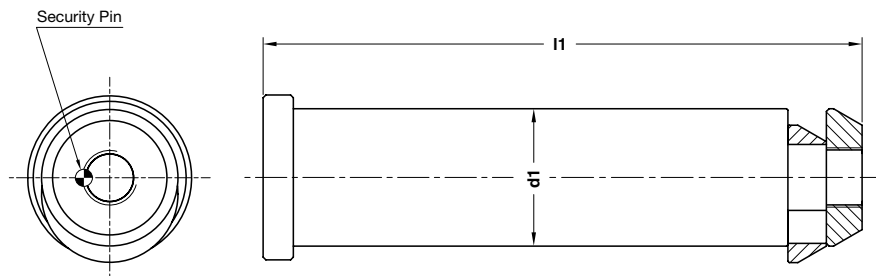
Respect the max load
Maximale Nutzlast beachten
Rispettare il carico Max

WARNING - ACHTUNG - ATTENZIONE:

For safety reason, please consider always that the weight of the die has to be supported by just 2 lifting pins.

Aus Sicherheitsgründen stets berücksichtigen, dass zwei Tragbolzen das gesamte Werkzeuggewicht tragen müssen.

Per ragioni di sicurezza, considerare sempre che il peso dello stampo deve essere sopportato da 2 soli perni.



	BMW CODE
	2 174 867

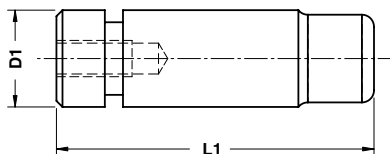
BMW CODE	Max load (kg)	Max die weight (kg)	l1	d1	Material
2 168 400	3200	6400	158	30	CK45
2 174 867	5000	10000	187	40	CK45
2 168 402	8000	16000	220	50	CK45
2 174 868	12500	25000	246	60	CK45
2 168 404	18000	36000	305	80	CK45
2 174 865	25000	50000	360	80	CK45
2 174 866	31500	63000	405	80	42CrMo4 + QT

PAD RETAINER PIN - STECKBOLZEN - PERNO DI ARRESTO

Notes

Material: 42CrMo4
800÷1000 N/mm²

STOCK



Standard BMW

	BMW CODE
	2 173 660

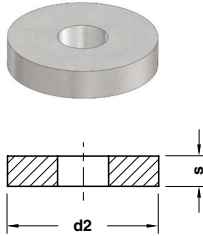
BMW CODE	D1	L1	BMW CODE	D1	L1
2 173 659	32	111	2 173 663	32	128
2 173 660	40	145	2 173 664	40	165
2 173 661	50	171	2 173 665	50	196
2 173 662	63	206	2 173 666	63	241

WASHER - SCHEIBE - RONDELLA

Notes

Material: CK45 - HRC: 45÷50

STOCK



BMW CODE

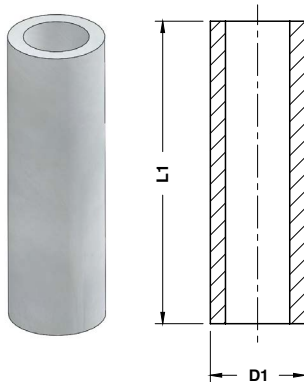
0 281 619

BMW CODE	d2	s
0 281 618	56	10
0 281 619	42	8
0 281 620	35	6
2 171 891	68	10

SPACER TUBE - DISTANZBUCHSE - TUBO DISTANZIALE

Notes

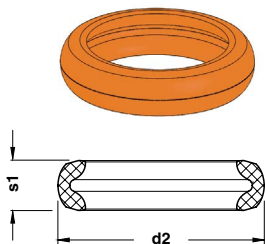
Material: St37 - **HRC:** 56+60



	BMW CODE
	2 171 895

BMW CODE	D1	L1	BMW CODE	D1	L1	BMW CODE	D1	L1	BMW CODE	D1	L1
2 168 799	13	50	2 168 808	20	50	2 171 895	25	150	3 038 921	42	80
2 168 800	13	63	2 168 809	20	63	2 168 819	25	200	3 038 922	42	100
3 380 926	13	100	3 021 666	20	80	2 173 794	25	< 200	3 038 923	42	125
2 174 881	13	< 100	2 168 811	20	100	2 171 896	25	> 200	3 038 924	42	150
2 171 892	13	> 100	2 168 812	20	125	3 038 912	36	50	3 038 925	42	200
2 168 802	16	50	2 168 813	20	200	3 038 913	36	63	3 038 927	42	< 200
2 168 803	16	63	2 173 793	20	< 200	3 038 914	36	80	3 038 926	42	> 200
2 168 804	16	80	2 171 894	20	> 200	3 038 915	36	100	3 038 928	55	150
3 021 663	16	100	2 168 814	25	50	3 038 916	36	125	3 038 929	55	200
0 266 957	16	125	2 168 815	25	63	3 038 917	36	150	3 038 931	55	< 200
2 168 807	16	200	2 168 816	25	80	3 038 918	36	200	3 038 930	55	> 200
2 173 792	16	< 200	2 168 817	25	100	3 038 920	36	< 200			
2 171 893	16	> 200	2 168 818	25	125	3 038 919	36	> 200			

BUFFER - STOSSDÄMPFER - AMMORTIZZATORE



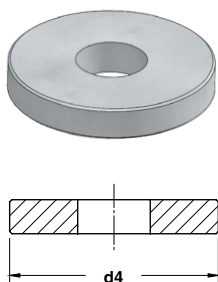
STOCK

Notes

Material: CO-Polyester Elastomer

ORDER EXAMPLE	BMW CODE			
	2 173 881			
BMW CODE	d2	s1	Shore	Max load (N)
2 173 880	26,2	7,7	55	5500
2 173 881	32,1	10,8	72	9000
2 173 882	46,3	17,7	72	20000
2 173 883	54,6	21,6	55	30000
2 173 884	61,8	21,5	55	46000
2 173 885	78,2	30	55	75000
3 039 562	99,5	33,2	55	97000

WASHER - SCHEIBE - RONDELLA



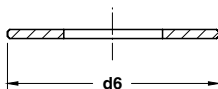
STOCK

Notes

Material: CK45

ORDER EXAMPLE	BMW CODE	
	2 175 382	
BMW CODE	d4	
2 175 381	30	
2 175 382	35	
2 175 383	50	
2 175 384	65	
2 175 385	70	
2 175 386	90	

WASHER - SCHEIBE - RONDELLA



STOCK

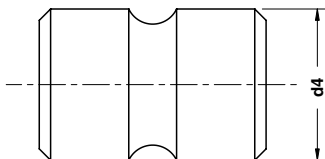
Notes

Material: 90MnCrV8 - HRC: 56

	BMW CODE
	2 175 388
BMW CODE	d6
2 175 387	30
2 175 388	35
2 175 389	50
2 175 390	65
2 175 391	70
2 175 392	90

Standard BMW

SHOCK ABSORBER - HALTELEMENT - AMMORTIZZATORE



STOCK

Notes

Material: CO-Polyester Elastomer

	BMW CODE
	2 173 698
BMW CODE	d4
2 173 697	40
2 173 698	50
2 173 699	63
2 173 700	80

